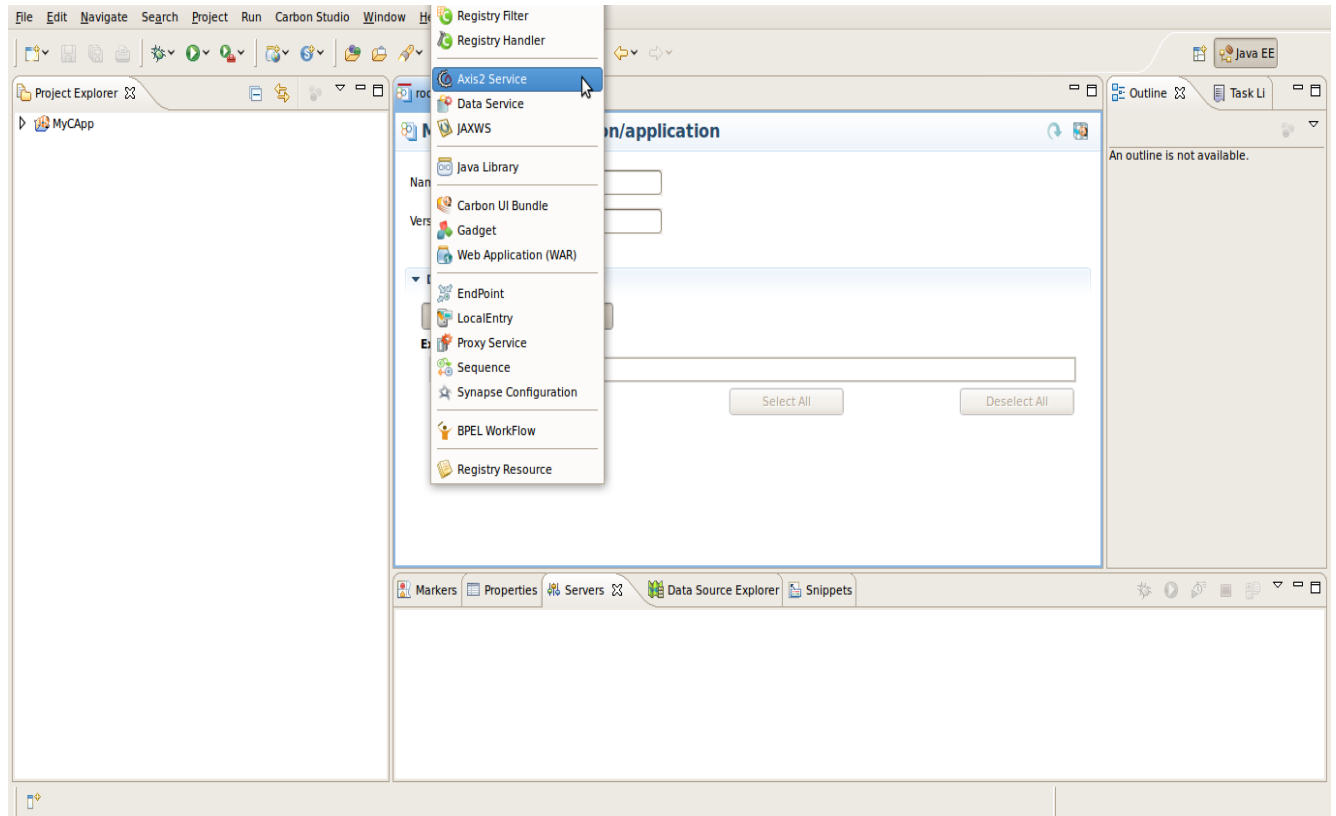


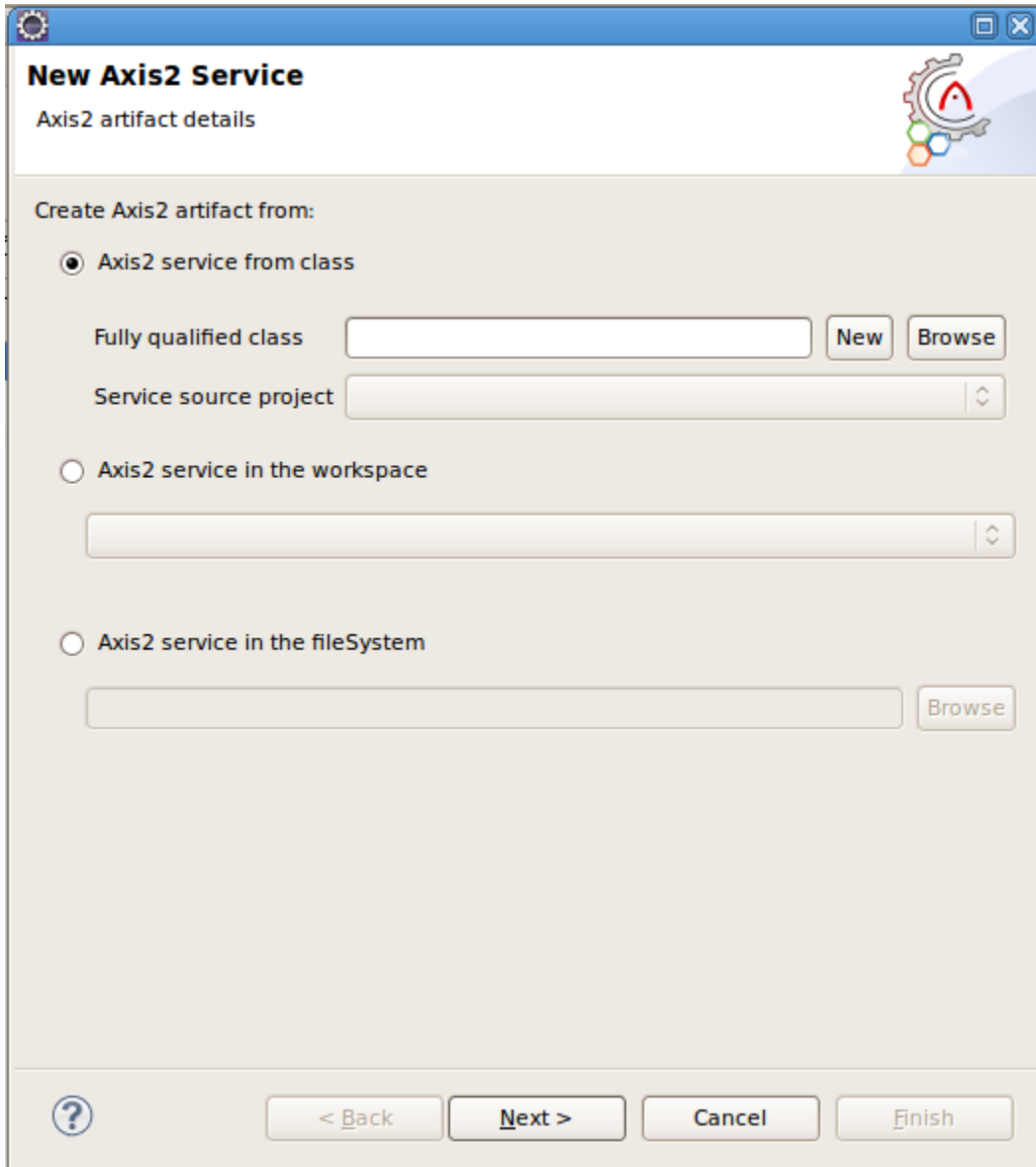
## How to create an Axis2 Service using WSO2 Carbon Studio

Assuming you are using WSO2 Carbon Studio 1.0.1 with [Eclipse IDE for Java EE Developers \(Eclipse helios\)](#)

1. Create a C-App project
2. Create Axis2 artifact
  - a. click on “**Create Artifact**” of `root-artifact.xml` and select “**Axis2 Service**”



- b. first option will be selected by default. Click on the “**New**” button.



In the class creation wizard page give necessary information and click Finish.

**New Java Class**

**Java Class**  
Create a new Java class.

Source folder:

Package:

Enclosing type:

Name:

Modifiers:  public  default  private  protected  
 abstract  final  static

Superclass:

Interfaces:

Which method stubs would you like to create?

public static void main(String[] args)

Constructors from superclass

Inherited abstract methods

Do you want to add comments? (Configure templates and default value [here](#))

Generate comments

**New Java Class**

**Java Class**  
Create a new Java class.

Source folder: MyCApp/java-src Browse...

Package: org.carbonstudio.sample Browse...

Enclosing type: Browse...

Name: HelloWorld

Modifiers:  public  default  private  protected  
 abstract  final  static

Superclass: java.lang.Object Browse...

Interfaces: Add...  
Remove

Which method stubs would you like to create?

public static void main(String[] args)

Constructors from superclass

Inherited abstract methods

Do you want to add comments? (Configure templates and default value [here](#))

Generate comments

? Cancel Finish

Now the given information will be filled in to Axis2 Service artifact creation wizard page and click Next.



c. Give a name to the axis2 service artifact

## New Axis2 Service

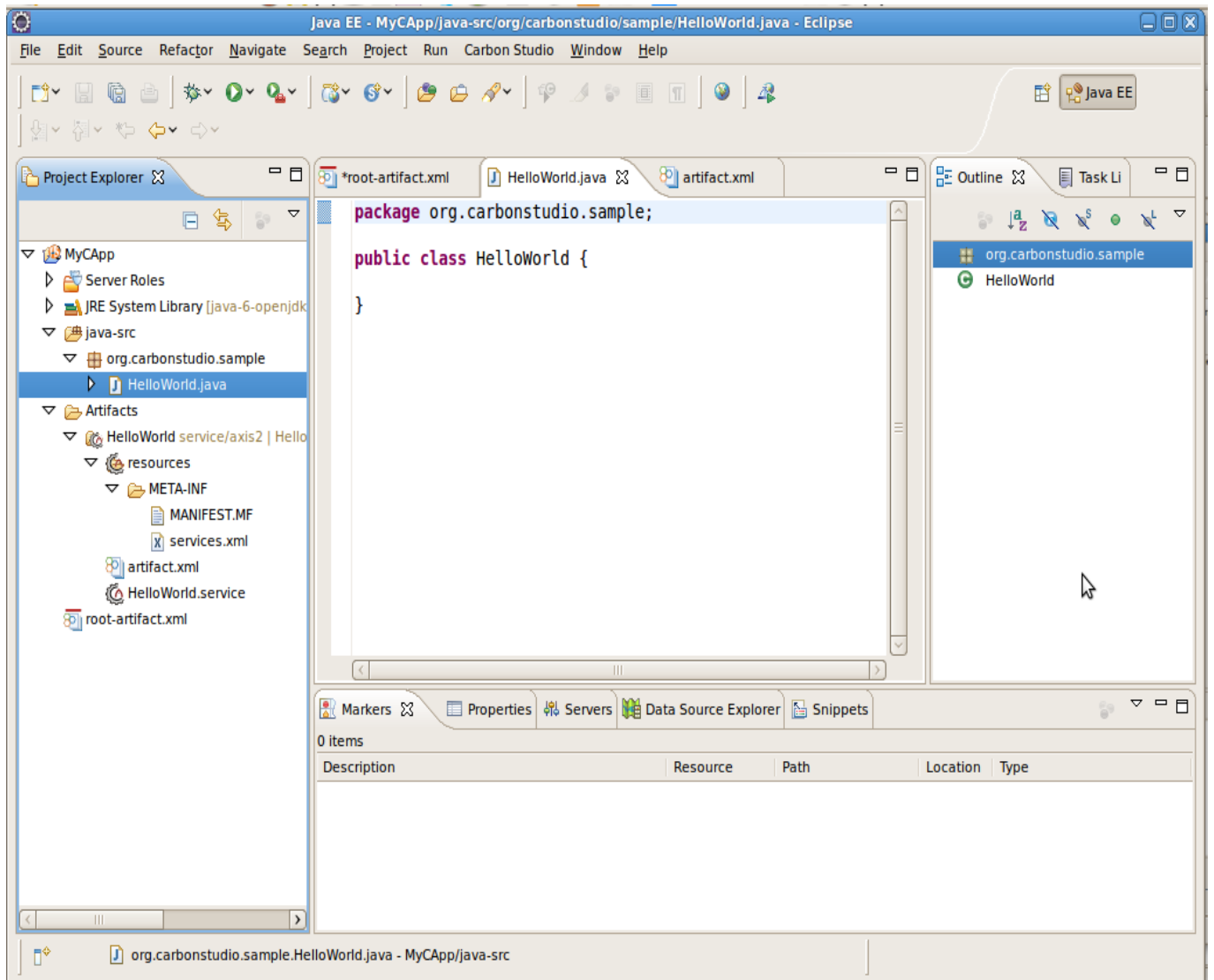


Enter or select the parent folder:

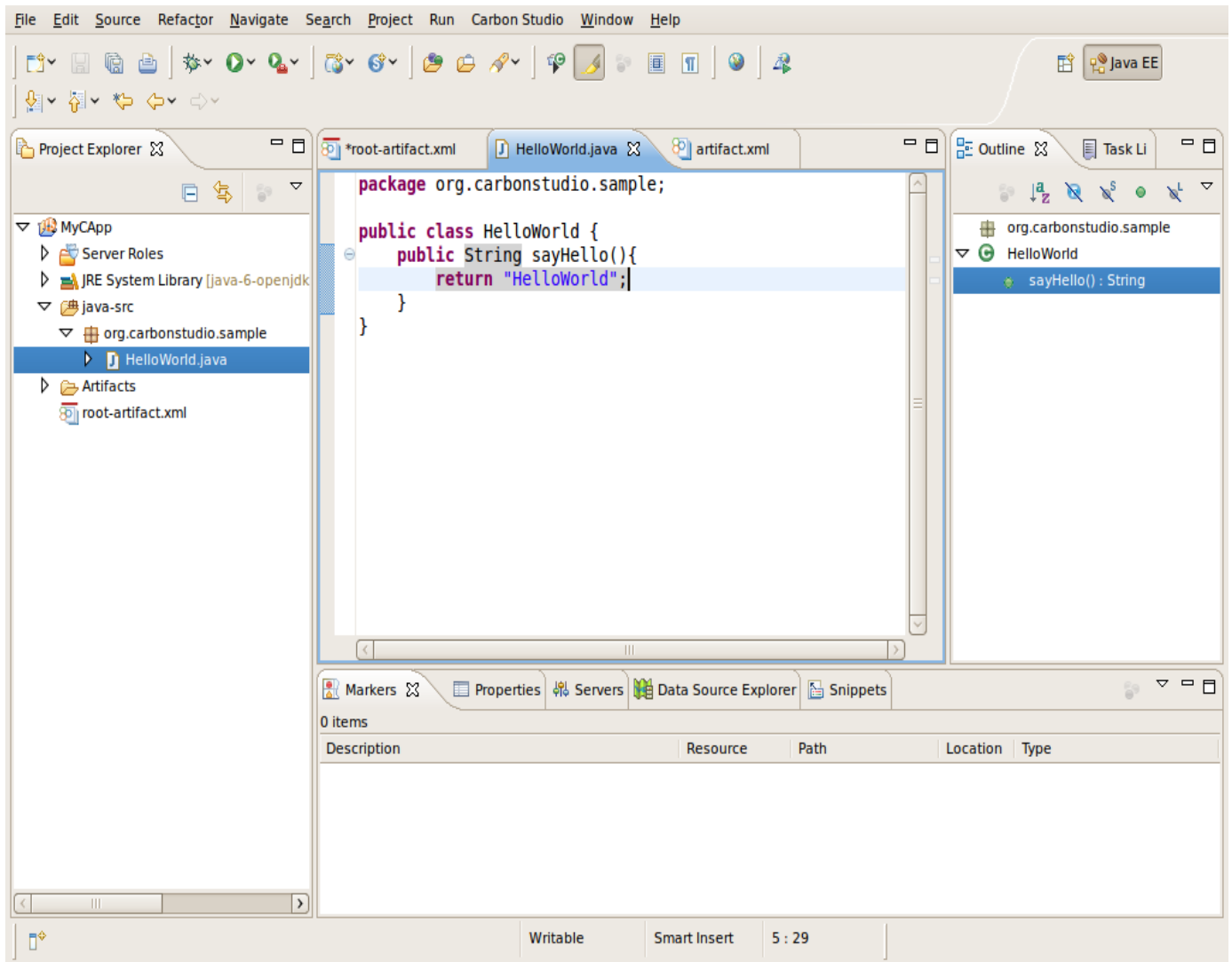
  

Axis2 Service

- d. Now you will see axis2 artifact is created under “**Artifacts**” folder. You can see **HelloWorld.service** and **services.xml** has been created.



e. add a method to HelloWorld java class



- f. you can create **axis2 archive (aar)** or you can create a **client** for the service that you have created.



